



THE UNIVERSITY OF
NEWCASTLE
AUSTRALIA

Determinants of an Evidence-Based Practice Environment

Jed Duff RN PhD FACORN
Associate Professor of Nursing
University of Newcastle

Evidence Practice Gap

43% of Australian patients not getting evidence-based care

45% of US patients not getting evidence-based care

Evidence creation to application lag approximately 17 years

Runciman 2012; McGlynn 2003; Morris 2014



Nursing EBP

METHOD

- Survey of 800 nurses at 9 sites
- Evidence-Based Practice Questionnaire and Barriers to Research Utilisation Scale

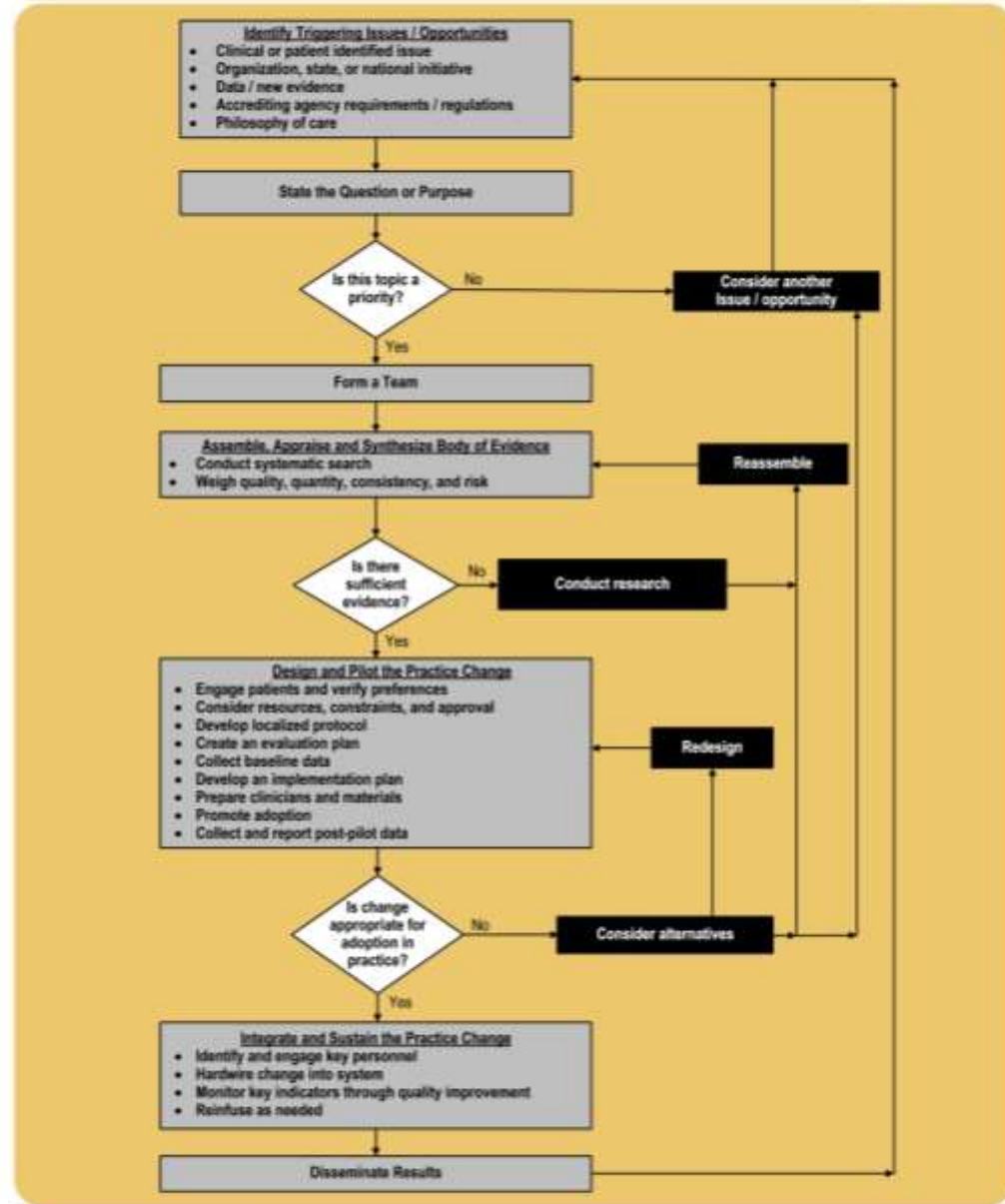
RESULTS

- ✓ Positive attitude to EBP
- ✓ Necessary knowledge and skills
- X Limited application of research into practice
- X Lack of support and structure major barrier

Iowa Model of EBP

- Planned action theory
- Outlines how implementation activities should be planned, organised, and scheduled to be effective
- Strengths include:
 - Intuitive design
 - Incorporates perspectives of clinician and organisation
 - Broad applicability to different settings

The Iowa Model Revised: Evidence-Based Practice to Promote Excellence in Health Care



EBP Models

EBP models have existed for two decades or more

A standardised approach to EBP improves quality of care

EBP models have not been uniformly adopted or consistently applied

Call for research to inform the wide scale adoption and use of EBP models



Research Question

What are the perspectives and experiences of nurses using the Iowa Model of Evidence-Based Practice and how might they inform the introduction of the model into other practice settings?



Design & Methods

DESIGN

An interpretive description¹

METHODS

- 15 participants
- Maximum variation sampling
- 60 to 120 min interviews recorded and transcribed
- Thematic analysis²

¹Thorne 2016 ;²Braun & Clarke 2013



Determinants of an EBP Environment



Determinants of an EBP Environment



Shared EBP model

Focus on frontline issues

Aligned to priorities

Nurse led yet interdisciplinary

Determinants of an EBP Environment



- EBP as core business
- Scaffolded EBP education
- Hands-on EBP training
- Academic partnerships
- Knowledge infrastructure

Determinants of an EBP Environment



Process

Support

Facilitation

Context

EBP
Environment

Direct care nurse led

Engaged nurse managers

Facilitation by nurse specialists

Expert support from nurse scientists

Determinants of an EBP Environment



- Collaborative yet competitive
- Focused on continuous improvement
- Shared governance framework
- Appreciation of external recognition
- Leadership support

Take home Message

- Implementing a shared EBP model is an important first step toward improving evidence-based care
- To be effective it should be done in conjunction with efforts to optimise the practice environment
- Determinant of the EBP environment include:
 - Scaffolded EBP education
 - Hands-on EBP training
 - Knowledge infrastructure
 - Team facilitation
 - Supportive culture and leadership



Thank You

jed.duff@newcastle.edu.au

